

ON MAY 24-25, 2022 THE AAMC CENTER FOR HEALTH JUSTICE HOSTED THE:

MATERNAL HEALTH INCUBATOR



GIVE BIRTHING PEOPLE FULL AGENCY TO ARTICULATE WHAT EQUITABLE ACCESS LOOKS LIKE



SO THAT EVERY COMMUNITY STARTS FROM THE SAME STARTING LINE!

WE NEED HEALTHY BIRTHING PEOPLE for HEALTHY BABIES

WE ARE FACING AN URGENT HEALTH CRISIS

MANY DISPARITIES... LOCATION RACE (BLACK INDIGENOUS LATINX) DATA INEQUITY



COLLECTION USE INTERPRETATION



RECOGNIZING & CELEBRATING SACREDNESS of BIRTH

WE NEED TO BUILD THE VILLAGE

DON'T SEPARATE THE MENTAL SUPPORT FROM THE MATERNAL HEALTHCARE SYSTEM

IMPACT of COVID-19 on BIRTHING PEOPLE



THE PANDEMIC STARTED WHEN MY BABY WAS VERY SMALL... NOT KNOWING MANY THINGS ABOUT MY POSTPARTUM... IT WAS DIFFICULT

I HAD TO GIVE BIRTH WITH A MASK ON AND THE VICTORIES THAT BROKE MY HEART

FROM A DATA PERSPECTIVE:

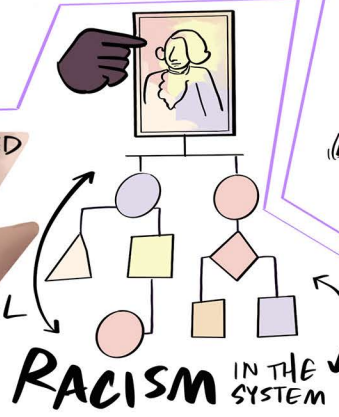
COVID-19 ↑ REAL-TIME DATA MONITORING OF BIRTHING PEOPLE & INFANTS

RESEARCH NEED- BETTER KNOWLEDGE OF VACCINE EFFICACY ON BIRTHING PEOPLE

WE HOPE THIS CONTINUES BEYOND THE PANDEMIC

DEMONSTRATED SIGNIFICANT RACIAL HEALTH DISPARITIES

COULD ONLY BE EXPLAINED BY STRUCTURAL RACISM



BUILD & GROW PERINATAL HEALTH PROFESSIONALS

MIDWIVES DOULAS BIRTHING CENTERS

WHILE HOSPITALS SORT THEMSELVES OUT! AND, YES WE NEED TO WORK WITH and THROUGH THE SYSTEM

RECOGNIZING RACISM IN THE SYSTEM WITHOUT VILLAINIZING THE SYSTEM

TAKEAWAYS

HOW ARE YOU BOTH DOING?

STOP SEPARATING MATERNAL and INFANT HEALTH

INCLUDING LGBTQ+ BIRTHING PEOPLE IN THE ROOM

↳ LISTEN WITH HUMILITY

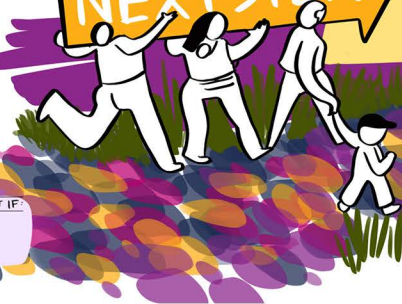
↳ LEAN IN and LEARN



WE NEED TO GET TO ACTION

NEXT STEPS

ADVANCING MATERNAL HEALTH POLICY WHILE ADDRESSING RACIAL INEQUITY



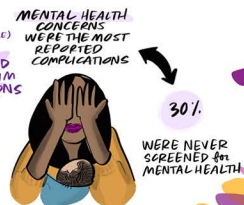
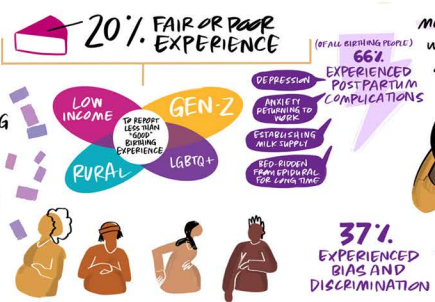
WHAT BIRTHING PEOPLE IN THE U.S. ARE SAYING

LOGAN BURDETTE HEALTH POLICY INTERVIEW AAMC CENTER FOR HEALTH JUSTICE MAY 24, 2022



80% POSITIVE BIRTHING EXPERIENCE

IN SPRING 2022, AAMC CENTER FOR HEALTH JUSTICE CONDUCTED A POLL OF 1206 BIRTHING PEOPLE



MORE LIKELY TO REPORT IF:

- NON-HISPANIC BLACK
- GEN-Z
- LOWER INCOME
- LGBTQ+

YOLANDA LIMAN Drawing Change